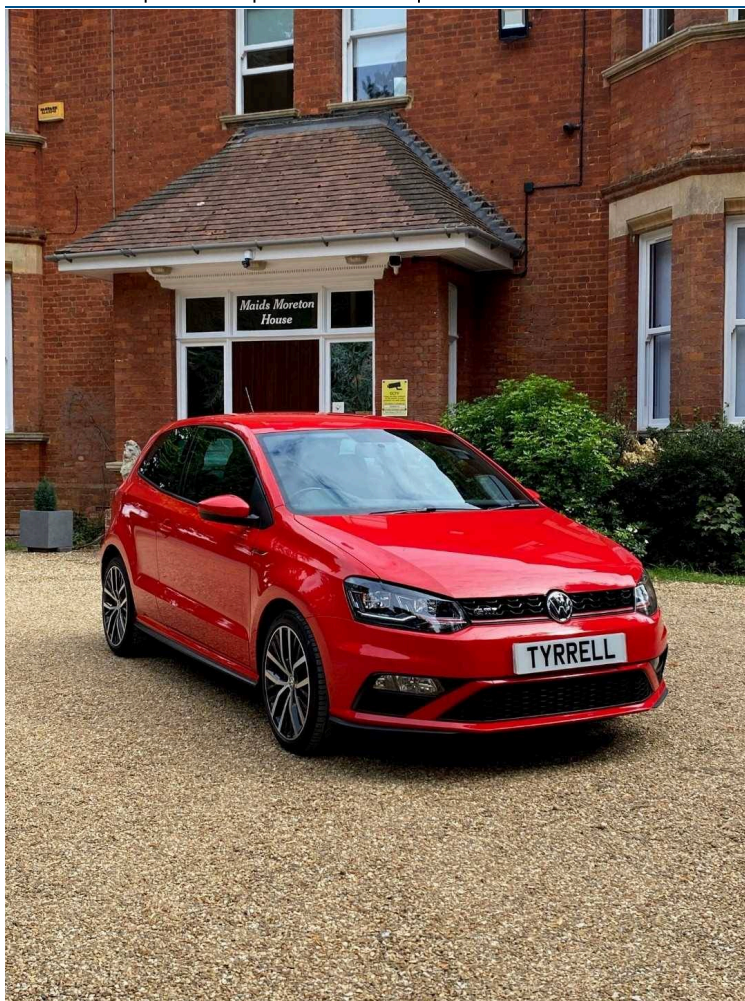




2016-16 | VOLKSWAGEN POLO

GTI DSG | Petrol | Semi Auto | RED



£11,995

Mileage **51,314 miles**

Fuel **Petrol**

Owners **4**

Engine **1.8 CC**

Transmission **Semi Auto**

Gears **7**

SPECIFICATIONS

Fuel Computer	Bluetooth Preparation (Phone)	Power Assisted Steering (PAS)
CD Radio	Leather Steering Wheel	Cloth Upholstery
Electronic Stability Programme (ESP)	Remote Central Locking	Alloy Wheels
Cruise Control	DAB Radio	Solid Paint
ISOFIX	Alarm	Air Conditioning
Electronic Brake Assistance (EBA)	Steering Column - Adjustable	Front Parking Sensor
12v Socket	Traction Control	Cupholders
Headlight Cleaning System	Pollen Filter	Electric & Heated Door Mirrors
Split Rear Seats	Anti Lock Brakes	Lumbar Support
Passenger Airbag	USB and AUX	Driver Airbag

TECHNICAL

Performance	
Top speed	147 mph
Engine power	189 bhp
Engine power	141 kw
Emissions Ice	
CO ₂ (g/km)	129 (g/km)
Fuel Consumption Ice	
MPG (combined)	50 mpg
MPG (extra urban)	60 mpg
Capacities	
Kerb weight	1067 kg

....MORE.... For the full details please call us or scan the QR code above

01280 821886

chris@tyrrellautomotive.com

Tyrrell Automotive Limited Vitalograph Business Park Maids Moreton Bucks MK18 1SW

Whilst every effort has been made to ensure the accuracy of the vehicle specification, some inaccuracies may occasionally occur. It is important that you do not rely solely on this information, but check with a member of the sales staff about any features which may affect your decision to buy the car.